

Customer :

customer

Customer part :

customer part

Comment :

Comment

S1=0.03

S2=0.35

Tmax=433

Tp S2=472.0

PI=0.08

HI=45

Sample =8904.2

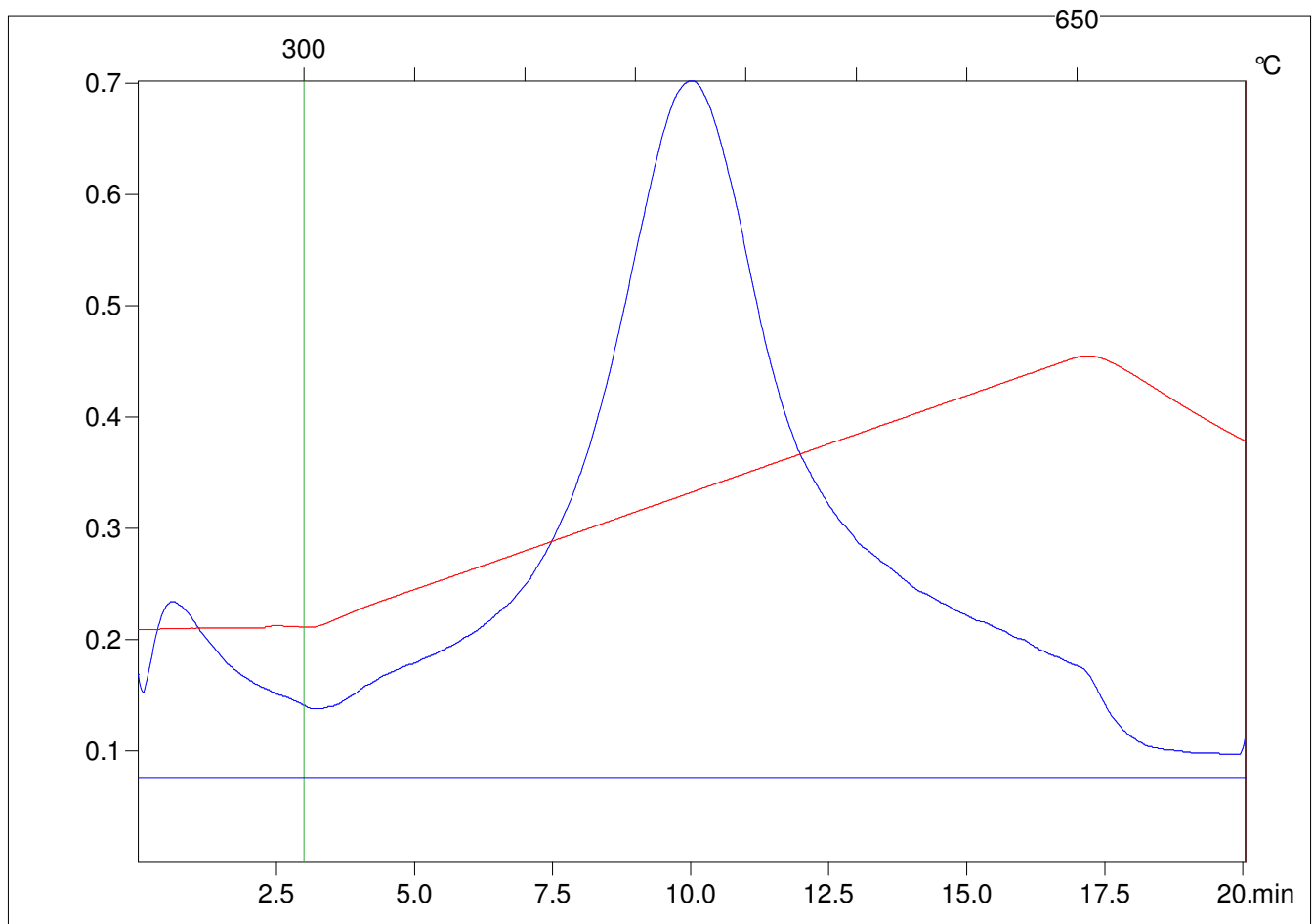
Method =Bulk Rock

Cycle=Basic

KFID(10\*9)=1167

Qty =70.4

TOC=0.78



C:\VINC\PK141015\PK053.R00 : FID pyrolysis graphic

State

Pyro Status

Oxi Status